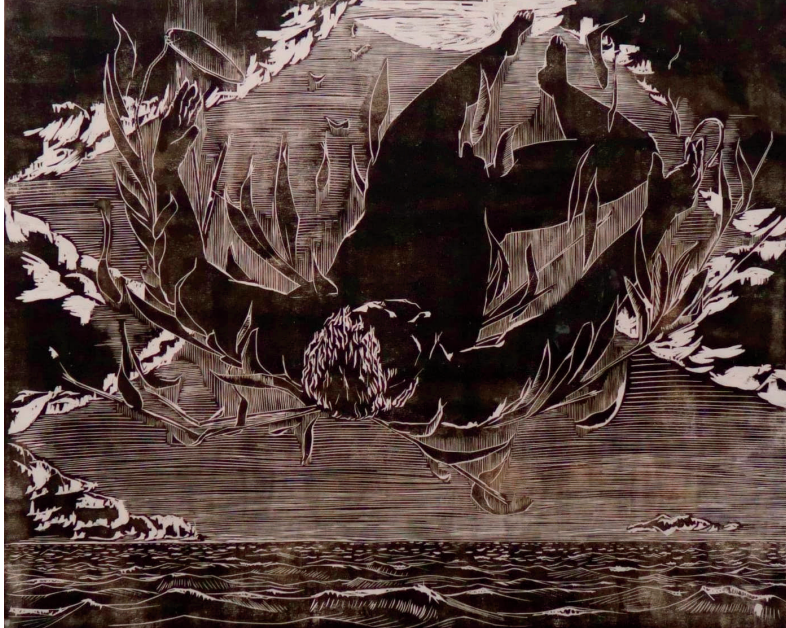




THE ARTIST
HOUSE
GUIDE

Alexandro Boehme
Ikarus 2020,
Woodcut print on Japanese Paper
140x120cm

Front Page
Maximilian Boehme
Be a Bird, 2019
Oil on cardboard



WELCOME!



Jonathan Auth
in the dark, oil on canvas 2018

TABLE OF CONTENTS

Page Content

I About the Artist House

VII Information/ Where to find....

IX Nearby/ Shopping

XIII House Rules

XV Music

XVII Kitchen Appliances

XX How to keep the house cool and the mosquitos out

XXIII Services



ABOUT THE ARTIST HOUSE

FROM TRADITION TO DESIGN

We are trying to find the essence of the historical form - embedded in local materials- to create a timeless design.

As this house has a long family history, it combines and unites two generations in work with material and design and the knowledge and culture of life.

PHILOSOPHY OF EVERYDAY LIFE

Objects you use every day have the most significant value. We, therefore, pay attention to the quality, origin, history, and material of all items provided in the house.

But the house is also a former farmer's house. A gross of the design continues this.

MATERIALS AND TECHNIC

The house was renovated in awareness of preserving the old. Therefore we used the traditional techniques to maintain the house's character. But also to consciously underline the advantages of the old construction methods. The house is painted with chalk inside and out, the floors out of stone. The house's materials come mainly from the former ruin or the island, like the stone of the kitchen worktop which was previously part of an olive press.

FROM SLEEPING ALCOVE TO QUEENSIZE BED

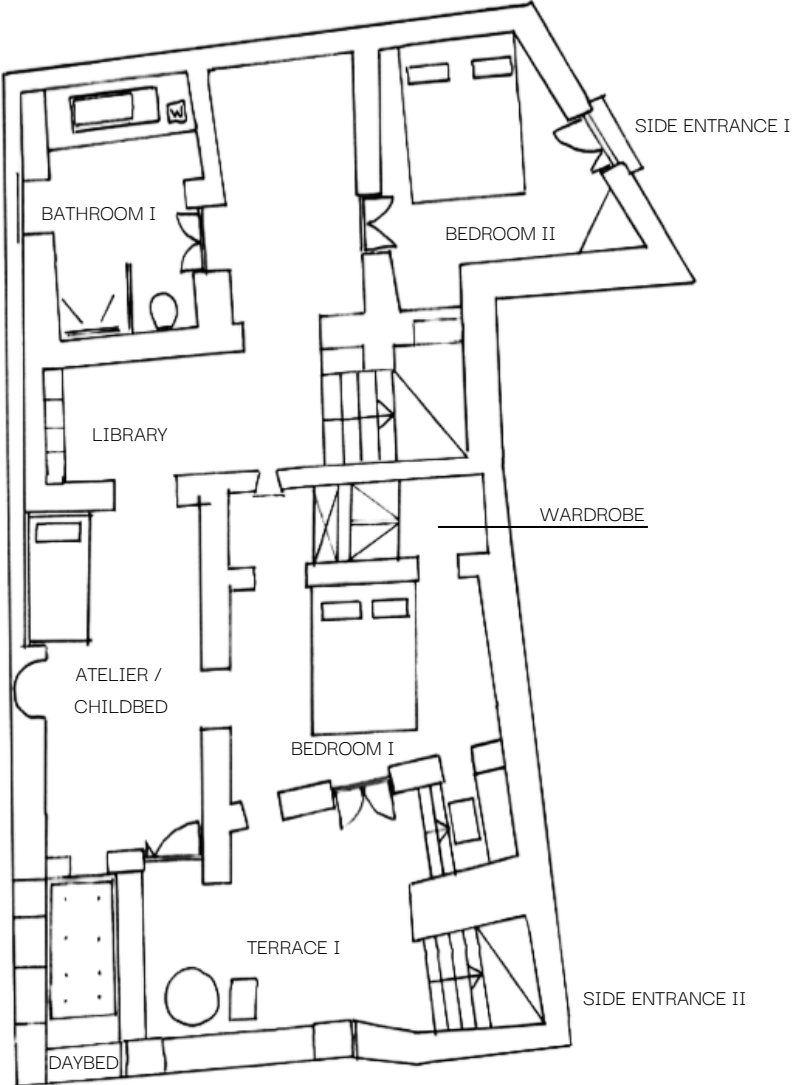
A few decades ago, the Artist House consisted of three independent houses. In each of them lived a family. Small sleeping alcoves were connected to the living rooms, in one the children, in one the parents, or all together. In the basements of the village were stables for donkeys and farming equipment.

In the last twenty years, the stables were renovated as a part of the upper house, the donkeys were gone, and the houses got larger.

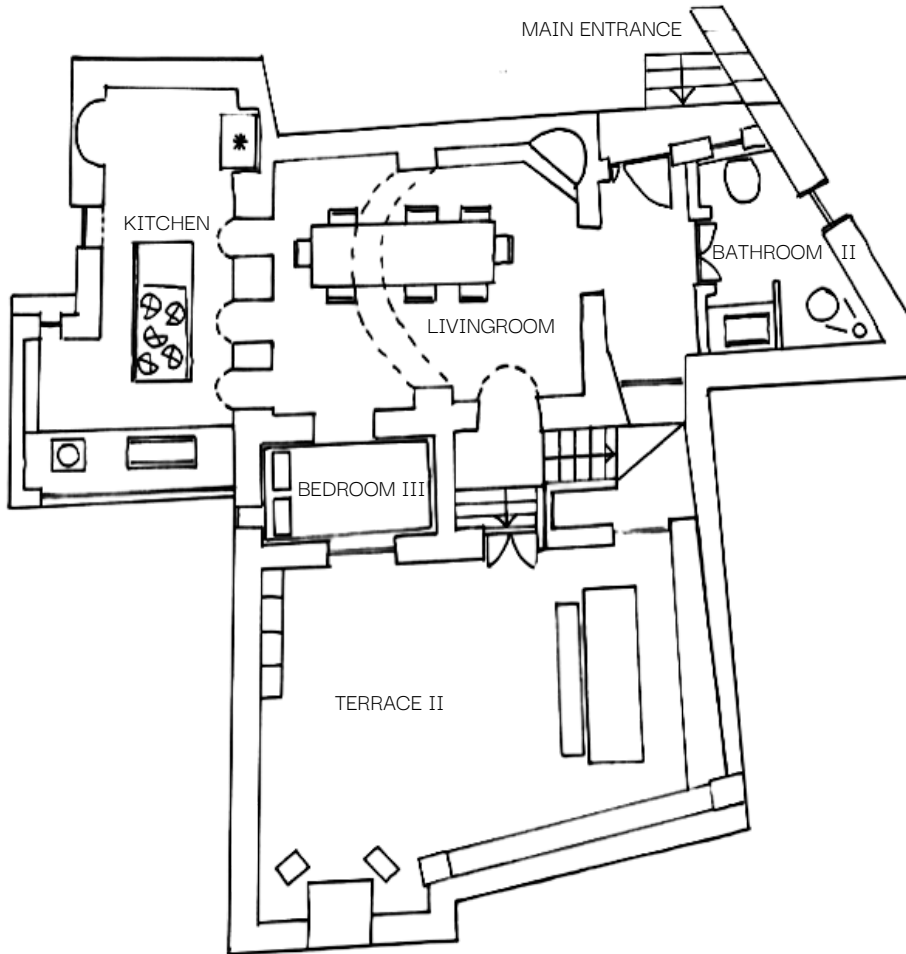
Still, the architecture of village houses is shaped for the former use. You can feel the value animals held to the people at the time as you walk through the countryside, looking inside the old stone stables. They are round and artistic, built in the rocks or fields. Built by farmers and not architects, they stand on the island, outlasting wars, earthquakes, and skyscrapers.



GROUND FLOOR



UPPER FLOOR



INFORMATION

WIFI- CODE

Name: Artist House

Code: Triantaros100

CONTACT INFORMATION HOSTS

Max and Paulina

+30 6977610322

+49 1632350385

TAXI SERVICE TINOS TOWN

+30 2283022470

IN CASE OF AN EMERGENCY

Emergency 112

Fire Department: 199

Police 100

Coast Guard 108

Hospitals 106

General Telephone Assistance. 11888

HOW TO STOP THE WATER SUPPLY

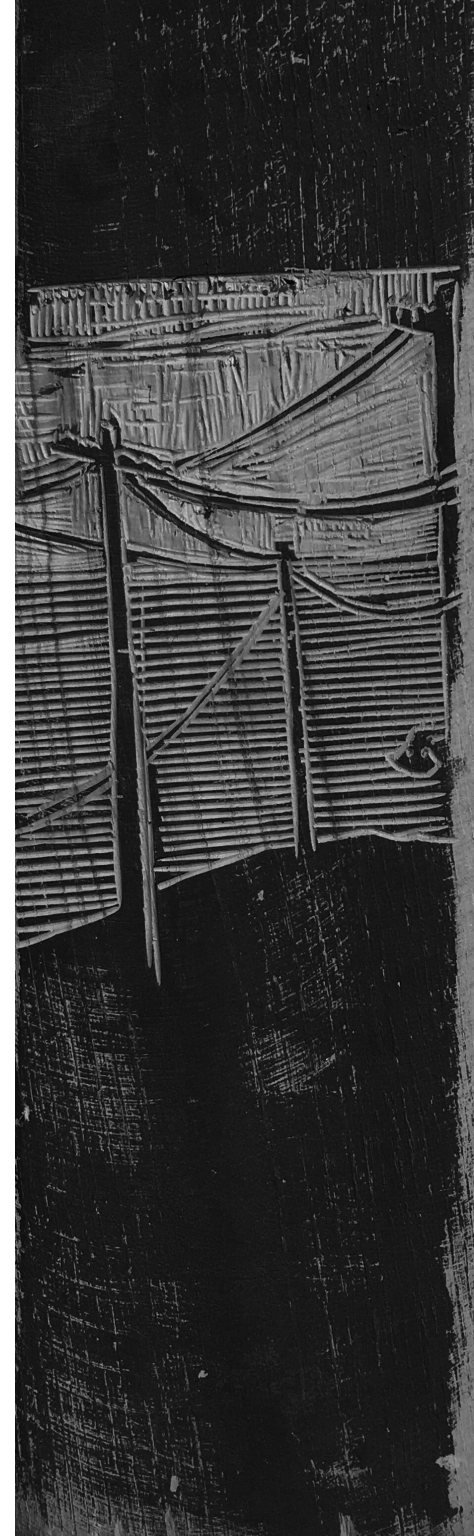
Go on the rooftop - there is a white water tank. On the right side of the tank, there are two taps. Close the bottom tap marked in blue.

FUSE BOXES

The fuse box on the upper floor is in the passage to the terrace behind the Luepertz artwork. In the basement it is next to the stairwell.

PHARMACY

The nearest pharmacy is called Apergi, located in the village of Mesi. Other pharmacies you will find in Tinos Town (Chora)





Where to find.....

1. Trash Cans

The trash cans are under the sink in the kitchen and the bathrooms. There you will also find garbage bags in different sizes for the bathroom and kitchen.

2. Bed linen

A fresh set of bed linen is provided in the walk-in wardrobe.

If you stay longer, you can book an additional cleaning service, which will also change your bed linen. (-> see service)

3. Towels

Towels are in the bathrooms; you will find a basket with beach towels in front of the terrace. Please only take the beach towels with you to the outside areas.

4. First Aid Kit and Sewing Kit

In the marble bathroom in the lower basket.

5. Grill

You will find a grill and barbecue utensils in the old chest on the ground floor.

Please notice that open fire is prohibited by law.

6. Toys and Books for Children

Tavli, Chess, and Books for Children you will find on the shelf in the library.

7. Cleaning Tools

Are together with the grill in the old chest.

Alexandro Boehme
Powelines I-III, 2019 woodcarving
For Details, see the PANO Art Catalogue

NEARBY

Taverns

The following list contains information about places nearby the artist's house.

Excellent taverns and cafes in the surrounding villages and Tinos Chora can not be listed here, and there is not enough space to write about them all.

In the TAMA magazine you will find informations about taverns and places on the island and a Tinos Guide.

The Artist House



Labo Bar, italian Café and Bar

1

To koutouki tis Elenis, Greek Tavern

2

Triantaraki, Café and Bar

3

Wine Bar

4

Lefkes, Greek Tavern

5

The ancient olive press, spring, and washhouse



Infrastructure



Trash Cans

The trash can one next at the number 5 and to the old olive press provides waste separation in plastic, paper, and residual waste.

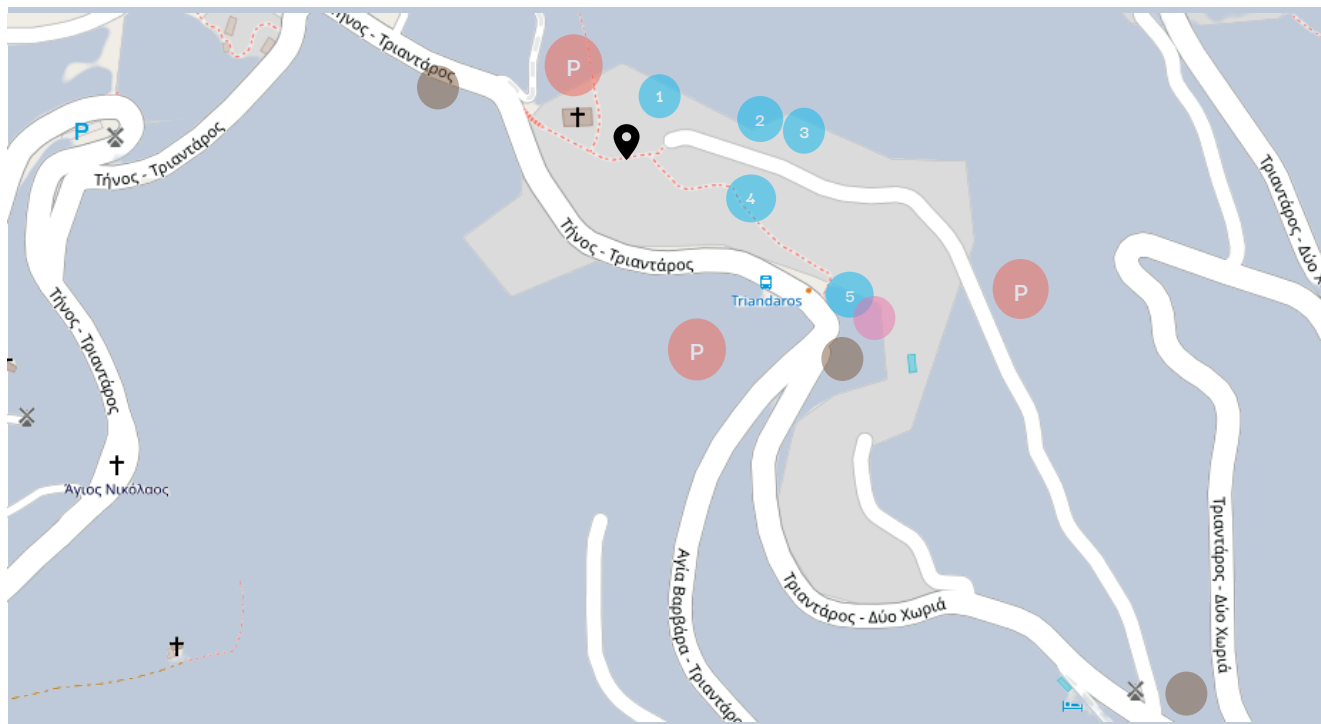
Bus

You find the bus timetable online at www.kteltinou.gr. The Greek translation of timetable is ΔΡΟΜΟΛΟΓΙΑ



Parking

Taxi: +30 22830 22470



SHOPPING

FARMERS MARKET

You can buy fresh vegetables and fruits at the farmer's market. The market is located in front of the harbor.

Opening hours: 08:00-14:00

SUPERMARKET

In Tinos-Chora you will find a great variety of supermarkets. AB Vasilopolus, Synka and Sklavenitis are the main supermarket companies.

FISHER

MARCO Ιχθυαγορά Ο Μάρκος (1)

Marco has fresh fish of local fishers.

Located in Douka Louka 1, Tinos

PELAGUS FISH TINOU (2)

Leof. Tripotamou 10, Tinos 842 00

WHOLE FOOD

"Biologos" (4)

is a wholefood supermarket in the Epar.Od. Tinou-Ormou Agiou Ioannis.

LIQUOR STORE

"Potopöleion" (4)

Next to the "Biologos" wholefood store in the Epar. Od. Tinou-Ormou Agiou Ioannis.

BAKERY

The nearest bakery to get fresh bread for your breakfast is in Arnados.

LOKAL FOOD

Karpos Tinian Traditional Products (5)

Local farmer's products include cheese, milk, spices, and hand-woven baskets.

Agricultural Cooperative of Tinos (AGRO) (6)

Kapodistriou 2, Tinos

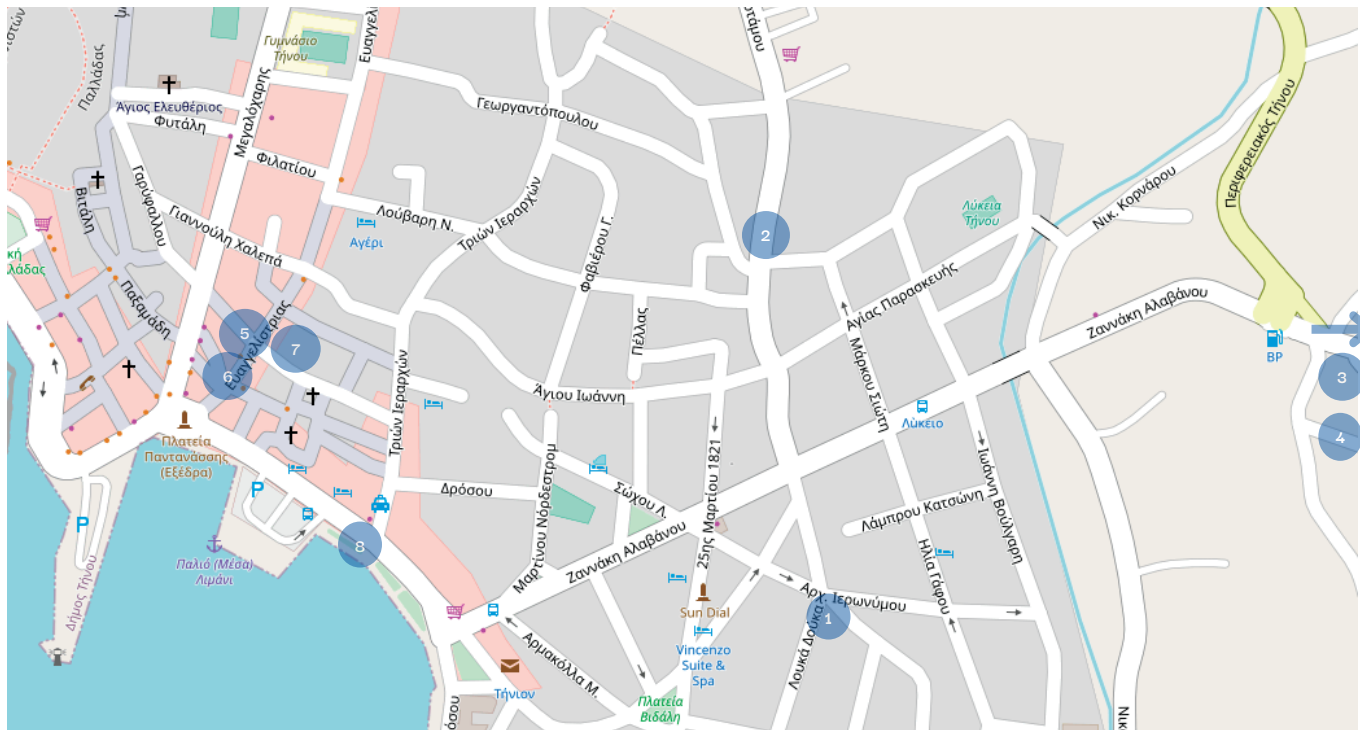
SPECIAL COOKING SUPPLYS

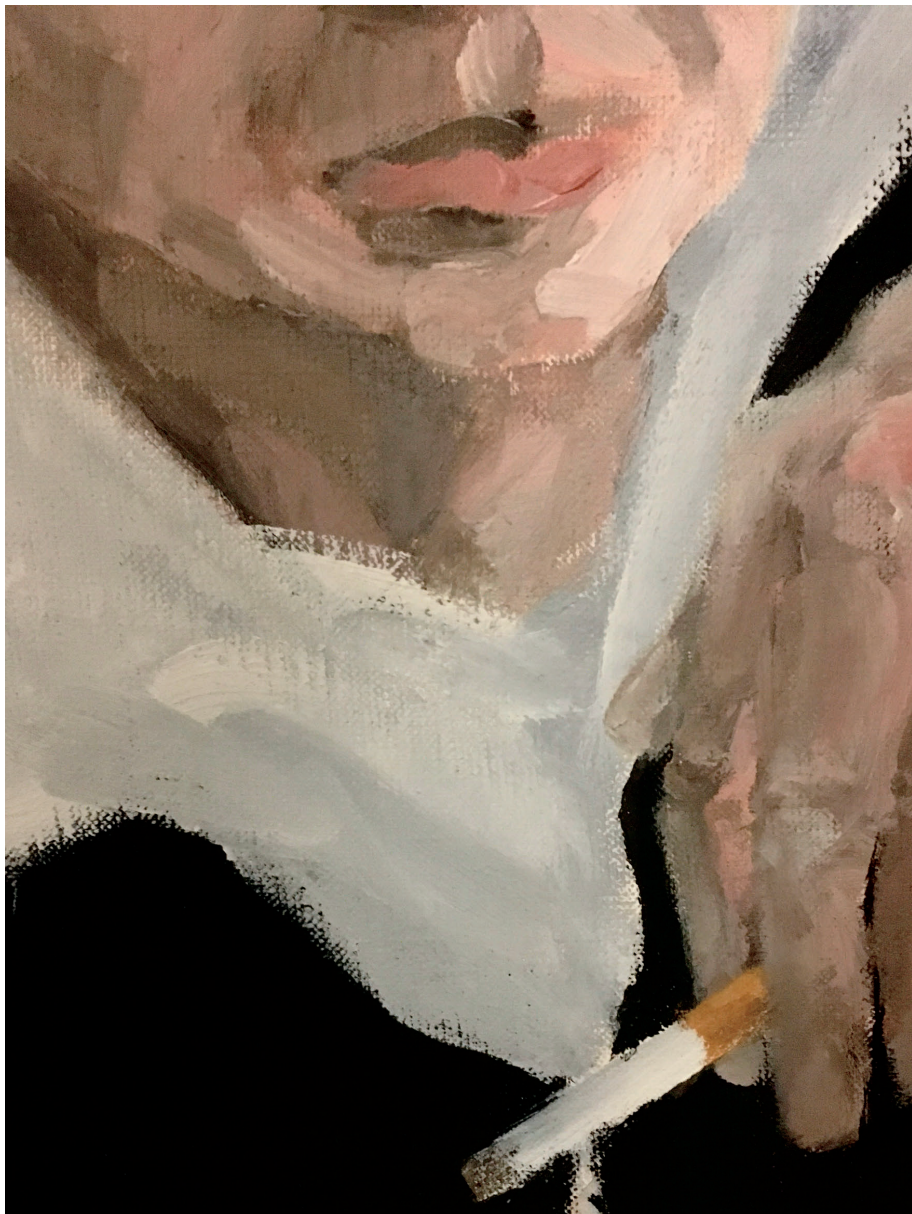
Spices, Tea, Nuts and more,

Gafou 7, Tinos (7)

ATM (8)

ATMs of various banks are located around the sailing boat harbor in the city of Tinos.





Detail of
Alexandro Boehme
the chess players, oil on canvas, 2017
For Details, see the PANO Art Catalogue

HOUSE RULES

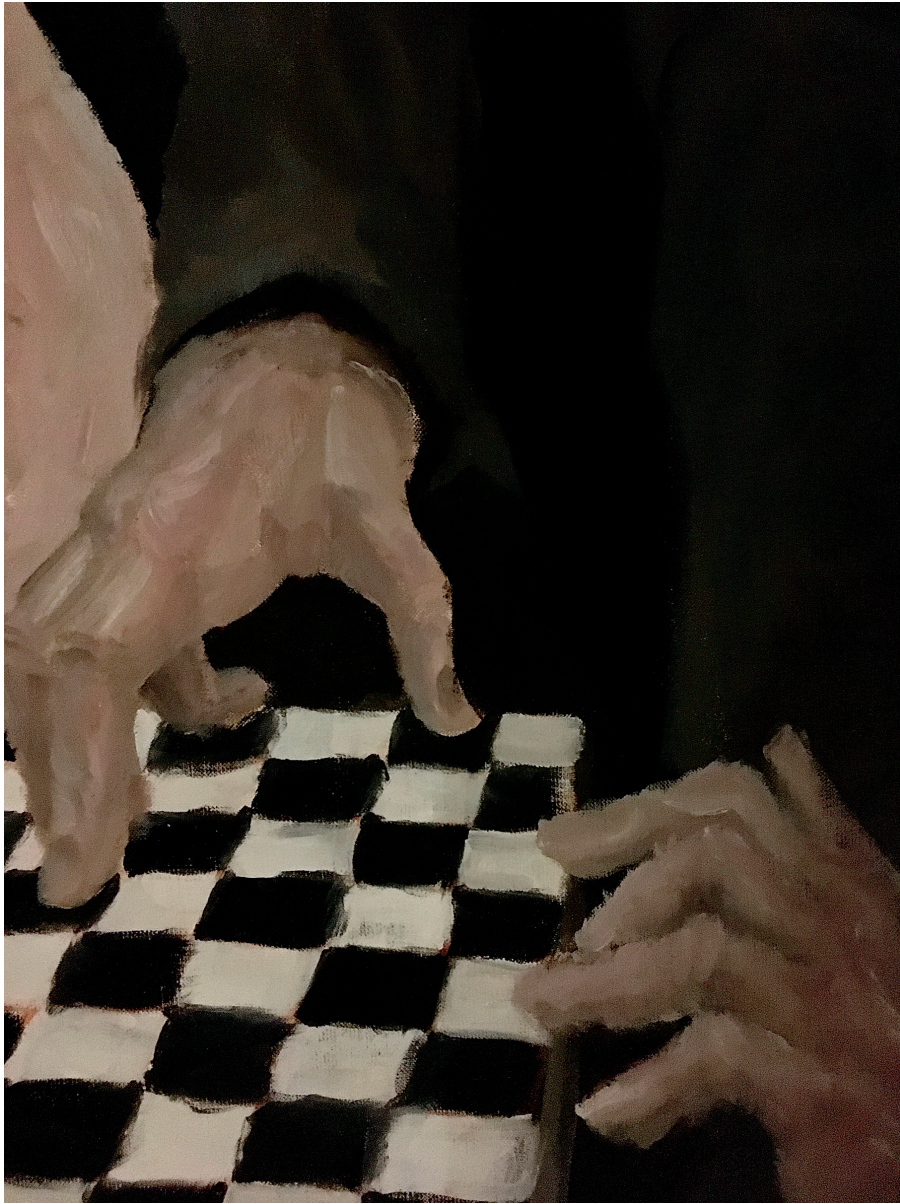
1. Be careful with the artworks.
2. Old village pipes: Throw the toilet paper in the bin, not in the toilet.
3. Please smoke outside.
4. In summer, the risk of fire is very high. Please note that open fires are prohibited by law. Also, do not throw cigarettes into the landscape; the dry grass burns like tinder. Be especially careful when grilling; avoid sparks.
5. Parties are prohibited in the artist house.
6. Use only the provided cleaning products to avoid surface damage. The materials are renovated with old building methods. You could also book the additional cleaning service. (-> see service)
7. If it rains, please put the cushions inside the house.
8. While cooking, open the kitchen window.
9. You can use the food and spices in the kitchen. Please note that you do this at your own risk.
10. Feel like home

MUSIC

And how to connect your mobile device

1. The Piano has speakers to connect with.
2. Turn on the Piano by pressing the "On" button on the right-hand side- and the first key on the left side as well as the adjacent key simultaneously to prevent the auto turn off after 30 min.
3. Make sure your mobile device is connected to the wifi.
4. Connect your device via AirPlay (Name: "Enable Time Travel_Piano")
5. Alternatively, as an android user- you could download "Kodi" Or connect your device with a stereo cable at the bottom of the Piano.

Volume: You can regulate the volume of the piano at the bottom of the keyboard - on the left-hand side and your phone, laptop, or tablet.



Detail of
Alexandro Boehme
the chess players, oil on canvas, 2017
For Details, see the PANO Art Catalogue



KITCHEN APPLIANCES

And how to use them

SAGE COFFEE MACHINE

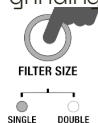
The water tank does not need to be refilled; it automatically refills with filtered water.

The coffee machine is matched to the coffee beans. Please don't change the settings of the grind amount yourself to avoid damage to the device.

Please note: The dip tray has to be emptied regularly! Especially when it shows a yellow sign in the middle of the tray.

COFFEE/ ESPRESSO

1. The portafilter has a one-cup filter basket. Make sure the filter size is set right. Push and release the portafilter at the left side of the machine to activate the grinding. Grinding will automatically stop by the right amount. If you wish to stop grinding before the cycle has finished, push and rerelease the portafilter.

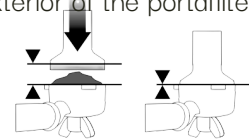


2. Tamping the Ground Coffee:

Once grinding is complete, tamp down firmly.

The top edge of the metal cap on the tamper should be level with the top of the filter basket after the coffee has been tamped.

3. Make sure there is no coffee powder left on the little metal edges on the exterior of the portafilter.



4. Shot Volume -1 cup or 2 cup

For an Espresso, press the 1 cup button.

For a Lungo, press the 2-cup button to start espresso extraction.





CAPPUCCHINO

1. Position the steam wand tip over the drip tray. Turn the STEAM / HOT WATER dial to the STEAM position. The STEAM / HOT WATER light will flash to indicate the machine is heating to create steam.
2. When the STEAM/HOT WATER light stops flashing, return the dial to the STANDBY position.
3. Then within 8 seconds, insert the steam wand tip (1-2cm) below the surface of the milk, close to the right hand side of the jug at the 3 o'clock position and quickly turn the dial back to the STEAM position. Pausing the steam avoids the milk splashing out of the jug (this pause function lasts for 8 seconds only).
4. The indicator strip on the milk jug will change color to highlight the exact milk temperature. Recommended is a milk temperature between 60-65°C. Once the milk is at the correct temperature (60-65°C), return the dial to the STANDBY position BEFORE removing the jug.
5. Set the jug to one side. Immediately wipe the steam wand with a damp cloth. Then, with the steam wand tip directed over the drip tray, briefly turn steam on to clear any remaining milk from inside the steam wand.
6. Pour milk directly into the espresso..

TEA / HOT WATER

Rotate the STEAM/HOT WATER dial to the HOT WATER position. Afterward rotate it back

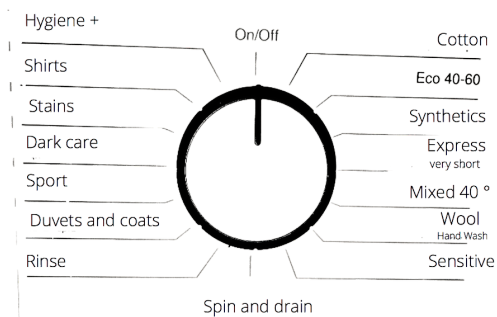
FILTERED WATER

The fridge's cold water and ice cubes are made from freshly filtered water by an osmose water filtering system.

GAS

The gas bottle must be changed if it is empty. Please notify us as soon as the flame fades. We will make sure that you can continue to cook as usual.

TRANSLATION WASHING MACHINE





HOW TO KEEP THE HOUSE COOL- AND MOSQUITOS OUT

The house is made of natural stone and built into the rock. The island architecture was created to protect the interior of the houses from the hot sun in summer and to keep the house warm in winter.

To help the house keep cool, here are some simple tips.

Close the window and lean the shutters when the midday sun shines in.

Use the fan and open windows to create a draft. The fan also keeps away mosquitoes, which do not like the wind.

To preserve the healthy indoor climate and protect the environment, we do not have air conditioning but try to support the climatic qualities of the original Cycladic construction.

When the Meltemi comes, when your summer hat, driven away by the wind, flies over the sea, you will not have problems with mosquitos. A good reason to be thankful for the Sand between the pages of your favorite books and the hair dancing on your face.

But if you are not that lucky, and the wind is not whistling, here are some tips against Mosquitos.

All of the windows have Mosquito-Nets.

To close the Mosquito net, pull the net down and gently press it against the window sill until you feel it snaps into place.

To open it again, press with two hands. one right, one left, gently against the window sill, and release the net.





Alexandro Boehme

the clown, oil on canvas, 2018

-XXIII- For Details, see the PANO Art Catalogue



SERVICES

We offer several services to enjoy your stay even more.

Please contact us in the beginning of your stay or before your arrival.

CLEANING SERVICE

For an extra cleaning service during your stay, we charge an additional 50 €. Change of linen included

PAINTING EQUIPMENT

To realize your own projects and ideas, we offer you to rent materials such as brushes, easels, oil paints, paper, and canvas for 40 € per stay.

Canvas and paper are calculated according to consumption, oil paint, and other colors according to grams.

PRIVATE CHEF

Price on request

A private Chef using fresh local foods. To get to know Greek food and to look over the chef's shoulder.

PANO

THE ARTIST HOUSE TRIANTAROS

Text/ Graphic
design

Pauline Krekeler



PANO

from tradition to design

www.pano-tinos.com

